



Push-In Fitting Type of Corrosion Resistant Stainless Steel Tube Fitting Stainless **SUS316** Series

Copper alloy
free material

Non-
grease

Clean-room
packaging
option



Chemical Industry



Medical Industry



Medicine Industry



Food Industry

● *Corrosion Resistance SUS316 for All Metal Parts*

● *FKM for Seal Rubber*

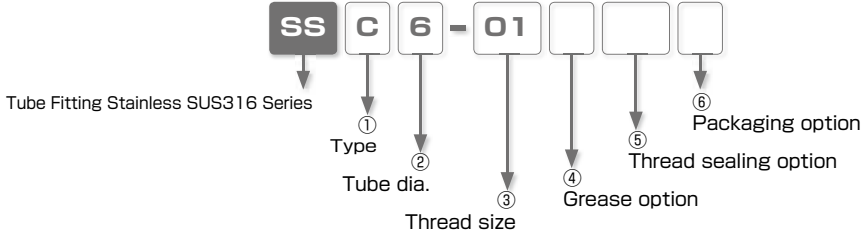
● *Oil-Free for All Parts and Compliant with
Japanese Food Sanitation Act*

 ● *Clean-Room Packaging Option*

Tube Fitting Stainless SUS316 Series

FITTING

Model Designation (Example)



① Type

Code	Type	Code	Type	Code	Type	Code	Type
C	Straight	OC	Inner Hex. Straight	L	Elbow	B	Branch Tee
U	Union Straight	G	Unequal Union Straight	V	Union Elbow	E	Union Tee
Y	Union Y	M	Bulkhead Union				

② Tube dia.

Tube dia.	mm size					
Code	4	6	8	10	12	16
Size (mm)	ø4	ø6	ø8	ø10	ø12	ø16

③ Thread size (* In case that ③ indicates tube dia., select tube dia. from table ②)

Thread size	Metric thread (mm)		Taper pipe thread			
Code	M5		01	02	03	04
Size	M5 × 0.8		R1/8	R1/4	R3/8	R1/2

④ Grease option

No code : Oil-free (fluorine coating on elastic sleeve)

X : Fluoriated synthetic grease on seal rubber (FKM)

⑤ Thread sealing option (Taper thread only)

No code : Standard (No Sealock and seal tape)

TP : Seal tape on thread

⑥ Packaging option

No code : Standard package

C : Clean-room package

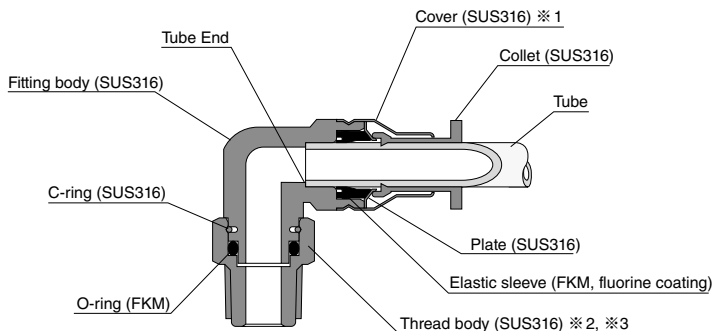
Specifications

Fluid medium	Air / Water (*) / Other chemicals (*)
Max. operating pressure	1.0MPa
Max. vacuum	-100kPa
Operating temp. range	-15 ~ 120°C (No freezing)

⚠ Warning

- * : Make sure to follow the instructions below when the fluid medium is water or other chemicals.
 1. Surge pressure must be controlled lower than max. operating pressure when using water or liquid as a fluid medium.
 2. Be sure to place Insert Ring into the tube edge when using water or liquid as a fluid medium.
 3. The specification above may not be applied, depending on the kind of chemicals or mixed gases used as fluid medium. Make sure to use PISCO products after verifying their suitability on the user side.

Construction (Elbow: SSL)



※ 1. Cover is rotatable but there is no problem on the products.

※ 2. Since Tube Fitting Stainless SUS316 Series is available for special applications such as chemical and food industries, there is no Sealock coating on the thread.

※ 3. Gasket (SUS316+FKM) is used on metric thread as standard equipment.

△ Detailed Safety Instructions

Before using PISCO products, be sure to read "Safety Instructions" and "Safety Instruction Manual" on page 23 to 27 and "Common Safety Instructions for Fittings" on page 33 to 35.

Warning

- When using chemicals as a fluid medium, be sure to contact us first. Depending on conditions, it may cause damage to the fittings, the escape of tubes and a fluid leakage.
- Be sure to place Insert Ring into the tube edge when the fluid is liquid. There is a possibility to cause the escape of tube and a fluid leakage without Insert Ring.
- After inserting the tube, make sure it is inserted properly and not to be disconnected by pulling it moderately. If the tube is disconnected, pull the collet toward oneself and insert the tube up to the tube end, then make sure it is inserted properly by pulling the tube moderately. See the table on the right for the reference.
- Do not use Tube Fitting Stainless SUS316 Series under the condition with vibration or physical impact. These may cause damage to the products, the escape of tubes and a fluid leakage.

Tube dia.	Pulling force of collet
ø4mm	5N
ø6mm	15N
ø8mm	15N
ø10mm	15N
ø12mm	25N
ø16mm	25N

Caution

- Taper thread is not coated with Sealock. When coating the thread with seal tape or sealant, do not coat 1.5 to 2 screw ridges from the tip of the thread.
- The level of corrosion and dust emission from the fittings varies by operating conditions. In case there is a possibility of negative effects on machines or facilities due to these conditions, evaluate the suitability of the products in advance.



Standard Size List

Connection: Thread ⇔ Tube

Type	Page	Thread size	Tube O.D. (mm)					
			4	6	8	10	12	16
SSCJ Straight	P.113	M5 × 0.8	●	●				
		R1/8	●	●	●			
		R1/4		●	●	●		
		R3/8				●	●	
		R1/2					●	●
SSOJ Inner Hex. Straight	P.114	M5 × 0.8	●	●				
		R1/8	●	●	●			
		R1/4		●	●	●		
		R3/8				●	●	
		R1/2					●	●

Type	Page	Thread size	Tube O.D. (mm)					
			4	6	8	10	12	16
SSL Elbow	P.115	M5 × 0.8	●	●				
		R1/8	●	●	●			
		R1/4		●	●	●		
		R3/8				●	●	
		R1/2					●	●
SSB Branch Tee	P.116	M5 × 0.8	●	●				
		R1/8	●	●	●			
		R1/4		●	●	●		
		R3/8				●	●	
		R1/2					●	●

Connection: Tube ⇔ Tube (Equal dia.)

Type	Page	Tube O.D. (mm)					
		4	6	8	10	12	16
SSU Union Straight	P.117	●	●	●	●	●	●
SSV Union Elbow	P.118	●	●	●	●	●	●
SSJ Union Tee	P.118	●	●	●	●	●	●
SSY Union Y	P.119	●	●	●	●	●	●
SSM Bulkhead Union	P.119	●	●	●	●	●	●

Connection: Tube ⇔ Tube (Unequal dia.)

Type	Page	Tube O.D. 1 (mm)	Tube O.D. 2 (mm)				
			4	6	8	10	12
SSG Unequal Union Straight	P.117	6	●				
		8		●			
		10			●		
		12				●	
		16					●

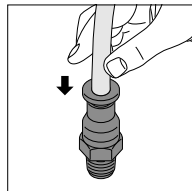
How to insert and disconnect

1. How to insert and disconnect tubes

① Tube insertion

Insert a tube into Push-In Fitting up to the tube end. Collet fixes the tube automatically and the elastic sleeve seals around the tube.

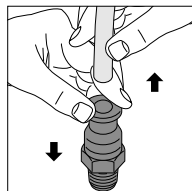
Refer to the dimension C or C1&C2 in the catalog.



② Tube disconnection

The tube is disconnected by pushing collet.

Make sure to stop air supply before the tube disconnection.



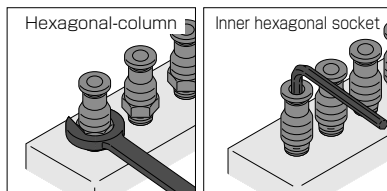
2. How to tighten thread

① Tightening thread

There are two ways to tighten thread. Use a spanner for a hexagonal-column. A hex key is for an inner hexagonal socket.

Inner hexagonal type can save spaces. Since there is no Sealock coating on taper pipe thread, use seal tape or sealant if necessary.

Refer to "Table 2: Recommended tightening torque / Sealock color / Gasket materials" under "4. Instructions for Installing a fitting" in "Common Safety Instructions for Fittings".



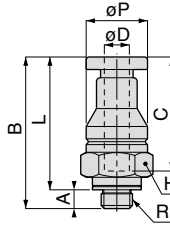
Applicable Tube and Related Products

Fluororesin (PFA) Tube.....P.628

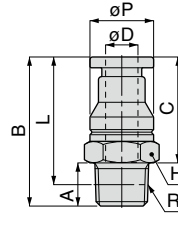
Polyamide Tube.....P.634

Insert Ring.....P.668

Needle Valve Stainless SUS316.....P.460



Metric thread type



Taper thread

Unit : mm

Model code	Tube O.D. ϕD	R	A	B	L	C	Hex. H	ϕP	Effective area (mm ²)	Weight (g)	CAD file name
SSC4-M5④⑤⑥	4	M5×0.8	3	24.2	21.2	18.2	10	9.8	3	6	SSC4-M5
SSC4-01④⑤⑥		R1/8	8	27.2	23.3				5	8.7	SSC4-01
SSC6-M5④⑤⑥	6	M5×0.8	3	25.6	22.6	19.6	12	11.8	3	8.4	SSC6-M5
SSC6-01④⑤⑥		R1/8	8	27.6	23.7				13.5	9.9	SSC6-01
SSC6-02④⑤⑥		R1/4	11	31.6	25.6				13.8	18	SSC6-02
SSC8-01④⑤⑥	8	R1/8	8	30.7	26.8	21.7	14	13.8	20.5	12	SSC8-01
SSC8-02④⑤⑥		R1/4	11	33.7	27.7				26.8	18	SSC8-02
SSC10-02④⑤⑥	10	R1/4	11	36	30	25.5	17	16.8	27.5	22	SSC10-02
SSC10-03④⑤⑥		R3/8	12	38	31.6				28.5	29	SSC10-03
SSC12-03④⑤⑥	12	R3/8	12	39.8	33.5	27.3	21	19.8	45.5	37	SSC12-03
SSC12-04④⑤⑥		R1/2	15	42.8	34.6				51.8	55	SSC12-04
SSC16-04④⑤⑥	16	R1/2	15	49.7	41.6	32.7	24	23.7	79.8	59	SSC16-04

※ 1. "L" is a reference value for height dimension after tightening taper thread.

※ 2. ④ in Model code / Replaced with "X" for Fluorinated synthetic grease

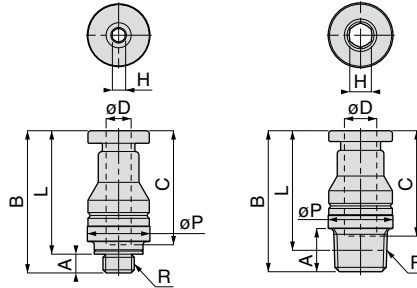
※ 3. ⑤ in Model code / Replaced with "TP" for Seal tape

※ 4. ⑥ in Model code / Replaced with "C" for Clean-room package

SSOC Inner Hex. Straight



RoHS compliant



Metric thread type

Taper thread

Unit : mm

Model code	Tube O.D. øD	R	A	B	L	C	Hex. H	øP	Effective area (mm ²)	Weight (g)	CAD file name
SSOC4-M5 ④⑤⑥	4	M5×0.8	3	22.7	19.7	18.2	2	10	3	5	SSOC4-M5
SSOC4-01 ④⑤⑥		R1/8	8	25.7	21.8		3		5	7.6	SSOC4-01
SSOC6-M5 ④⑤⑥	6	M5×0.8	3	25.1	22.1	19.6	2	12	3	7.7	SSOC6-M5
SSOC6-01 ④⑤⑥		R1/8	8	26.1	22.2		4		13.5	8.4	SSOC6-01
SSOC6-02 ④⑤⑥		R1/4	11	29.1	23.1		14	13.8	14.7	SSOC6-02	
SSOC8-01 ④⑤⑥	8	R1/8	8	30.2	26.3	21.7	5	14	20.5	12	SSOC8-01
SSOC8-02 ④⑤⑥		R1/4	11	31.2	25.2		6		26.8	15	SSOC8-02
SSOC10-02 ④⑤⑥	10	R1/4	11	36	30	25.5	6	17	27.5	21	SSOC10-02
SSOC10-03 ④⑤⑥		R3/8	12	34	27.6				28.5	24	SSOC10-03
SSOC12-03 ④⑤⑥		R3/8	12	36.3	30				27.3	8	20
SSOC12-04 ④⑤⑥	12	R1/2	15	39.3	31.1	27.3	8	22	51.8	45	SSOC12-04
SSOC16-04 ④⑤⑥		R1/2	15	46.7	38.6				32.7	12	24

※ 1. "L" is a reference value for height dimension after tightening taper thread.

※ 2. ④ in Model code / Replaced with "X" for Fluorinated synthetic grease

※ 3. ⑤ in Model code / Replaced with "TP" for Seal tape

※ 4. ⑥ in Model code / Replaced with "C" for Clean-room package

FITTING
CONTROLLER
VALVE
TUBE

MAKE-TO-ORDER
PRODUCTS

114

Stainless
Series

Chemical
Series

PP
Series

EG
Series

Anti-suction
& Purge Series

Oil Temperature
Control

Minimal
Series

Stop Fitting
Series

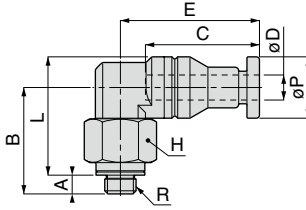
Rotary
Series

Twist-Proof
Fitting

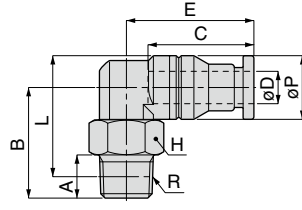
Block and
Connector

Coupling

Color
Cap



Metric thread type



Taper thread

Unit : mm

Model code	Tube O.D. øD	R	A	B	L	C	Hex. H	øP	E	Effective area (mm ²)	Weight (g)	CAD file name
SSL4-M5④⑥	4	M5×0.8	3	17	18.9	18.2	10	9.8	22.2	3	12	SSL4-M5
SSL4-01④⑤⑥		R1/8	8	19	19.9					3.8	15	SSL4-01
SSL6-M5④⑥	6	M5×0.8	3	19	21.9	19.6	12	11.8	23.6	3	19	SSL6-M5
SSL6-01④⑤⑥		R1/8	8	20.5	22.4					11.8	20	SSL6-01
SSL6-02④⑤⑥		R1/4	11	23	22.9					10	27	SSL6-02
SSL8-01④⑤⑥	8	R1/8	8	23	25.9	21.7	14	13.8	26.2	21	26	SSL8-01
SSL8-02④⑤⑥		R1/4	11	25						20.5	31	SSL8-02
SSL10-02④⑤⑥	10	R1/4	11	28.5	30.9	25.5	17	16.8	30.5	28	45	SSL10-02
SSL10-03④⑤⑥		R3/8	12	28.5	30.6					51	SSL10-03	
SSL12-03④⑤⑥		R3/8	12	30	33.6					52	69	SSL12-03
SSL12-04④⑤⑥	12	R1/2	15	34	35.7	27.3	22	19.8	33.3	49.5	89	SSL12-04
SSL16-04④⑤⑥		R1/2	15	36	39.7					32.7	24	23.7

※ 1. "L" is a reference value for height dimension after tightening taper thread.

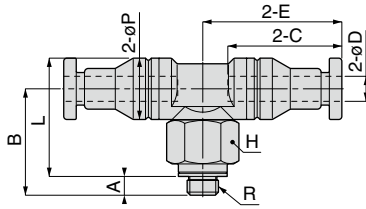
※ 2. ④ in Model code / Replaced with "X" for Fluorinated synthetic grease

※ 3. ⑤ in Model code / Replaced with "TP" for Seal tape

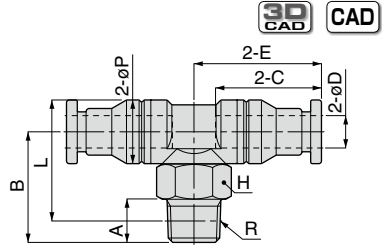
※ 4. ⑥ in Model code / Replaced with "C" for Clean-room package

SSB Branch Tee

RoHS compliant



Metric thread type



Taper thread

Unit : mm

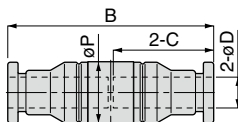
Model code	Tube O.D. øD	R	A	B	L	C	øP	E	Hex. H	Effective area (mm ²)	Weight (g)	CAD file name
SSB4-M5 ④⑤⑥	4	M5×0.8	3	17	18.9	18.2	9.8	22.2	10	3	17	SSB4-M5
SSB4-01 ④⑤⑥		R1/8	8	19	19.9					3.5	19	SSB4-01
SSB6-M5 ④⑤⑥	6	M5×0.8	3	19	21.9	19.6	11.8	23.6	12	3	24	SSB6-M5
SSB6-01 ④⑤⑥		R1/8	8	20.5	22.4					10.5	25	SSB6-01
SSB6-02 ④⑤⑥		R1/4	11	23	22.9				14	33	SSB6-02	
SSB8-01 ④⑤⑥	8	R1/8	8	23	25.9	21.7	13.8	26.2	14	20	33	SSB8-01
SSB8-02 ④⑤⑥		R1/4	11	25							38	SSB8-02
SSB10-02 ④⑤⑥	10	R1/4	11	28.5	30.9	25.5	16.8	30.5	17	27	56	SSB10-02
SSB10-03 ④⑤⑥		R3/8	12		30.6						62	SSB10-03
SSB12-03 ④⑤⑥	12	R3/8	12	30	33.6	27.3	19.8	33.3	21	51	85	SSB12-03
SSB12-04 ④⑤⑥		R1/2	15	34	35.7				22	52	105	SSB12-04
SSB16-04 ④⑤⑥	16	R1/2	15	36	39.7	32.7	23.7	40.7	24	71	128	SSB16-04

- ※ 1. "L" is a reference value for height dimension after tightening taper thread.
- ※ 2. ④ in Model code / Replaced with "X" for Fluorinated synthetic grease
- ※ 3. ⑤ in Model code / Replaced with "TP" for Seal tape
- ※ 4. ⑥ in Model code / Replaced with "C" for Clean-room package

FITTING
 CONTROLLER
 VALVE
 TUBE
 MAKE-TO-ORDER PRODUCTS
 116
 Stainless Series
 Chemical Series
 PP Series
 EG Series
 Anticorrosion & Pures Series
 Die Temperature Control
 Minimal Series
 Stop Fitting Series
 Rotary Series
 Twist-Proof Fitting
 Block and Connector
 Coupling
 Color Cap

SSU Union Straight

RoHS compliant



Unit : mm

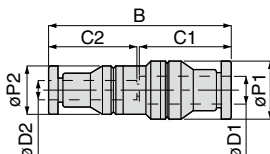
Model code	Tube O.D. øD	B	C	øP	Effective area (mm ²)	Weight (g)	CAD file name
SSU4④⑥	4	37.4	18.2	10	4.5	9.1	SSU4
SSU6④⑥	6	40.3	19.6	12	10.8	14	SSU6
SSU8④⑥	8	44.5	21.7	14	26	18	SSU8
SSU10④⑥	10	51.9	25.5	17	34.5	29	SSU10
SSU12④⑥	12	55.6	27.3	20	49.5	44	SSU12
SSU16④⑥	16	66.4	32.7	24	86	63	SSU16

※ 1. ④ in Model code / Replaced with "X" for Fluorinated synthetic grease

※ 2. ⑥ in Model code / Replaced with "C" for Clean-room package

SSG Unequal Union Straight

RoHS compliant



Unit : mm

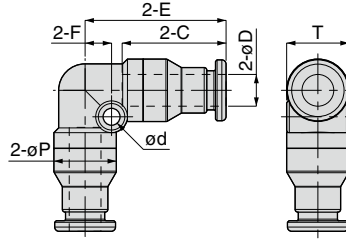
Model code	Tube O.D. øD1	Tube O.D. øD2	B	øP1	øP2	C1	C2	Effective area (mm ²)	Weight (g)	CAD file name
SSG6-4④⑥	6	4	38.7	12	10	19.6	18.2	4.5	11	SSG6-4
SSG8-6④⑥	8	6	42.2	14	12	21.7	19.6	10.8	15	SSG8-6
SSG10-8④⑥	10	8	48.2	17	14	25.5	21.7	26	22	SSG10-8
SSG12-10④⑥	12	10	53.8	20	17	27.3	25.5	34.5	35	SSG12-10
SSG16-12④⑥	16	12	61	24	20	32.7	27.3	49.5	50	SSG16-12

※ 1. ④ in Model code / Replaced with "X" for Fluorinated synthetic grease

※ 2. ⑥ in Model code / Replaced with "C" for Clean-room package

SSV Union Elbow

RoHS compliant



Unit : mm

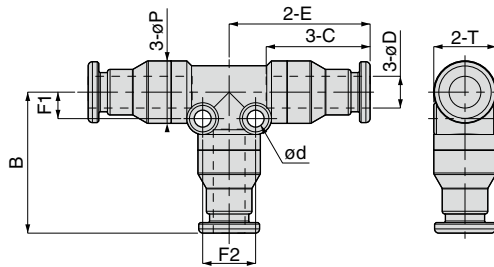
Model code	Tube O.D. øD	C	E	øP	ød	F	T	Effective area (mm ²)	Weight (g)	CAD file name
SSV4 ④⑥	4	18.2	24.2	9.8	3.2	4	9.8	3.5	13	SSV4
SSV6 ④⑥	6	19.6	26.6	11.8	3.2	5	11.8	9.5	20	SSV6
SSV8 ④⑥	8	21.7	29.7	13.8	3.2	6	13.8	20.8	27	SSV8
SSV10 ④⑥	10	25.5	35	16.8	4.2	7	16.8	29.5	42	SSV10
SSV12 ④⑥	12	27.3	37.8	19.8	4.2	8	19.8	48	62	SSV12
SSV16 ④⑥	16	32.7	45.2	23.7	4.2	9.5	23.7	69.5	91	SSV16

※ 1. ④ in Model code / Replaced with "X" for Fluorinated synthetic grease

※ 2. ⑥ in Model code / Replaced with "C" for Clean-room package

SSE Union Tee

RoHS compliant



Unit : mm

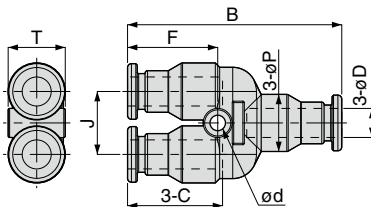
Model code	Tube O.D. øD	C	E	øP	ød	T	F1	F2	B	Effective area (mm ²)	Weight (g)	CAD file name
SSE4 ④⑥	4	18.2	24.2	9.8	3.2	9.8	4	8	24.2	3.5	18	SSE4
SSE6 ④⑥	6	19.6	26.6	11.8	3.2	11.8	5	10	26.6	9.8	27	SSE6
SSE8 ④⑥	8	21.7	29.7	13.8	3.2	13.8	6	12	29.7	20	37	SSE8
SSE10 ④⑥	10	25.5	35	16.8	4.2	16.8	7	14	35	28.8	59	SSE10
SSE12 ④⑥	12	27.3	37.8	19.8	4.2	19.8	8	16	37.8	50	87	SSE12
SSE16 ④⑥	16	32.7	45.2	23.7	4.2	23.7	9.5	19	45.2	74	126	SSE16

※ 1. ④ in Model code / Replaced with "X" for Fluorinated synthetic grease

※ 2. ⑥ in Model code / Replaced with "C" for Clean-room package

SSY Union Y

RoHS compliant



Unit : mm

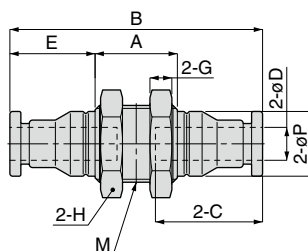
Model code	Tube O.D. øD	B	C	øP	J	ød	T	F	Effective area (mm ²)	Weight (g)	CAD file name
SSY4 ^{④⑥}	4	40.8	18.2	9.8	11	3.2	9.8	18.2	3	15	SSY4
SSY6 ^{④⑥}	6	44.3	19.6	11.8	13	3.2	11.8	18.6	8.5	24	SSY6
SSY8 ^{④⑥}	8	51	21.7	13.8	15	3.2	13.8	20.7	19	34	SSY8
SSY10 ^{④⑥}	10	58.4	25.5	16.8	18	4.3	16.8	23.5	24.8	52	SSY10
SSY12 ^{④⑥}	12	64.6	27.3	19.8	21	4.3	19.8	25.3	38.5	80	SSY12
SSY16 ^{④⑥}	16	78.4	32.7	23.7	25	4.3	23.7	30.2	53	121	SSY16

※ 1. ④ in Model code / Replaced with "X" for Fluorinated synthetic grease

※ 2. ⑥ in Model code / Replaced with "C" for Clean-room package

SSM Bulkhead Union

RoHS compliant



Unit : mm

Model code	Tube O.D. øD	M	B	E	A	C	øP	Hex. H	G	Effective area (mm ²)	Weight (g)	CAD file name
SSM4 ^{④⑥}	4	M12 × 1	43.4	15.2	13	18.2	9.8	14	4	4.5	19	SSM4
SSM6 ^{④⑥}	6	M14 × 1	46.3	15.6	15	19.6	11.8	17	4	10.8	27	SSM6
SSM8 ^{④⑥}	8	M16 × 1	50.5	17.7	15	21.7	13.8	19	4	25.5	35	SSM8
SSM10 ^{④⑥}	10	M20 × 1	56.9	20	17	25.5	16.8	24	5	34.8	60	SSM10
SSM12 ^{④⑥}	12	M22 × 1	62.6	21.8	19	27.3	19.8	27	6	48.5	87	SSM12
SSM16 ^{④⑥}	16	M27 × 1.5	72.4	26.7	19	32.7	23.7	32	6	85.5	118	SSM16

※ 1. ④ in Model code / Replaced with "X" for Fluorinated synthetic grease

※ 2. ⑥ in Model code / Replaced with "C" for Clean-room package



SAFETY Instructions

This safety instructions aim to prevent personal injury and damage to properties by requiring proper use of PISCO products.

Be certain to follow ISO 4414 and JIS B 8370

ISO 4414 : Pneumatic fluid power...Recommendations for the application of equipment to transmission and control systems.

JIS B 8370 : General rules and safety requirements for systems and their components.

This safety instructions is classified into "Danger", "Warning" and "Caution" depending on the degree of danger or damages caused by improper use of PISCO products.



Danger

Hazardous conditions. It can cause death or serious personal injury.



Warning

Hazardous conditions depending on usages. Improper use of PISCO products can cause death or serious personal injury.



Caution

Hazardous conditions depending on usages. Improper use of PISCO products can cause personal injury or damages to properties.



Warning

1. Selection of pneumatic products

- ① A user who is a pneumatic system designer or has sufficient experience and technical expertise should select PISCO products.
- ② Due to wide variety of operating conditions and applications for PISCO products, carry out the analysis and evaluation on PISCO products. The pneumatic system designer is solely responsible for assuring that the user's requirements are met and that the application presents no health or safety hazards. All designers are required to fully understand the specifications of PISCO products and constitute all systems based on the latest catalog or information, considering any malfunctions.

2. Handle the pneumatic equipment with enough knowledge and experience

- ① Improper use of compressed air is dangerous. Assembly, operation and maintenance of machines using pneumatic equipment should be conducted by a person with enough knowledge and experience.

3. Do not operate machine / equipment or remove pneumatic equipment until safety is confirmed.

- ① Make sure that preventive measures against falling work-pieces or sudden movements of machine are completed before inspection or maintenance of these machine.
- ② Make sure the above preventive measures are completed. A compressed air supply and the power supply to the machine must be off, and also the compressed air in the systems must be exhausted.
- ③ Restart the machines with care after ensuring to take all preventive measures against sudden movements.

Disclaimer

1. PISCO does not take any responsibility for any incidental or indirect loss, such as production line stop, interruption of business, loss of benefits, personal injury, etc., caused by any failure on use or application of PISCO products.
2. PISCO does not take any responsibility for any loss caused by natural disasters, fires not related to PISCO products, acts by third parties, and intentional or accidental damages of PISCO products due to incorrect usage.
3. PISCO does not take any responsibility for any loss caused by improper usage of PISCO products such as exceeding the specification limit or not following the usage the published instructions and catalog allow.
4. PISCO does not take any responsibility for any loss caused by remodeling of PISCO products, or by combinational use with non-PISCO products and other software systems.
5. The damages caused by the defect of Pisco products shall be covered but limited to the full amount of the PISCO products paid by the customer.



SAFETY INSTRUCTION MANUAL

PISCO products are designed and manufactured for use in general industrial machines. Be sure to read and follow the instructions below.

Danger

1. Do not use PISCO products for the following applications.
 - ① Equipment used for maintaining / handling human life and body.
 - ② Equipment used for moving / transporting human.
 - ③ Equipment specifically used for safety purposes.

Warning

1. Do not use PISCO products under the following conditions.
 - ① Beyond the specifications or conditions stated in the catalog, or the instructions.
 - ② Under the direct sunlight or outdoors.
 - ③ Excessive vibrations and impacts.
 - ④ Exposure / adhere to corrosive gas, inflammable gas, chemicals, seawater, water and vapor. *
* Some products can be used under the condition above(④), refer to the details of specification and condition of each product.
2. Do not disassemble or modify PISCO products, which affect the performance, function, and basic structure of the product.
3. Turn off the power supply, stop the air supply to PISCO products, and make sure there is no residual air pressure in the pipes before maintenance and inspection.
4. Do not touch the release-ring of push-in fitting when there is a working pressure. The lock may be released by the physical contact, and tube may fly out or slip out.
5. Frequent switchover of compressed air may generate heat, and there is a risk of causing burn injury.
6. Avoid any load on PISCO products, such as a tensile strength, twisting and bending. Otherwise, there is a risk of causing damage to the products.
7. As for applications where threads or tubes swing / rotate, use Rotary Joints, High Rotary Joints or Multi-Circuit Rotary Block only. The other PISCO products can be damaged in these applications.
8. Use only Die Temperature Control Fitting Series, Tube Fitting Stainless SUS316 Series, Tube Fitting Stainless SUS316 Compression Fitting Series or Tube Fitting Brass Series under the condition of over 60°C (140° F) water or thermal oil. Other PISCO products can be damaged by heat and hydrolysis under the condition above.
9. As for the condition required to dissipate static electricity or provide an antistatic performance, use EG series fitting and antistatic products only, and do not use other PISCO products. There is a risk that static electricity can cause system defects or failures.
10. Use only Fittings with a characteristic of spatter-proof such as Anti-spatter or Brass series in a place where flame and weld spatter is produced. There is a risk of causing fire by sparks.
11. Turn off the power supply to PISCO products, and make sure there is no residual air pressure in the pipes and equipment before maintenance. Follow the instructions below in order to ensure safety.
 - ① Make sure the safety of all systems related to PISCO products before maintenance.
 - ② Restart of operation after maintenance shall be proceeded with care after ensuring safety of the system by preventive measures against unexpected movements of machines and devices where pneumatic equipment is used.
 - ③ Keep enough space for maintenance when designing a circuit.
12. Take safety measures such as providing a protection cover if there is a risk of causing damages or fires on machine / facilities by a fluid leakage.

⚠ Caution

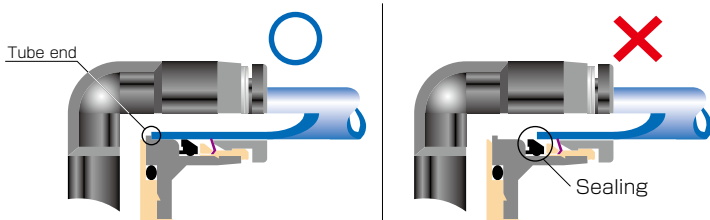
1. Remove dusts or drain before piping. They may get into the peripheral machine / facilities and cause malfunction.
2. When inserting an ultra-soft tube into push-in fitting, make sure to place an Insert Ring into the tube edge. There is a risk of causing the escape of tube and a fluid leakage without using an Insert Ring.
3. The product incorporating NBR as seal rubber material has a risk of malfunction caused by ozone crack. Ozone exists in high concentrations in static elimination air, clean-room, and near the high-voltage motors, etc. As a countermeasure, material change from NBR to HNBR or FKM is necessary. Consult with PISCO for more information.
4. Special option "Oil-free" products may cause a very small amount of a fluid leakage. When a fluid medium is liquid or the products are required to be used in harsh environments, contact us for further information.
5. In case of using non-PISCO brand tubes, make sure the tolerance of the outer tube diameter is within the limits of Table 1.

● Table 1. Tube O.D. Tolerance

mm size	Nylon tube	Polyurethane tube	inch size	Nylon tube	Polyurethane tube
ø1.8mm	—	± 0.05mm	ø1/8	± 0.1mm	± 0.15mm
ø3mm	—	± 0.15mm	ø5/32	± 0.1mm	± 0.15mm
ø4mm	± 0.1mm	± 0.15mm	ø3/16	± 0.1mm	± 0.15mm
ø6mm	± 0.1mm	± 0.15mm	ø1/4	± 0.1mm	± 0.15mm
ø8mm	± 0.1mm	± 0.15mm	ø5/16	± 0.1mm	± 0.15mm
ø10mm	± 0.1mm	± 0.15mm	ø3/8	± 0.1mm	± 0.15mm
ø12mm	± 0.1mm	± 0.15mm	ø1/2	± 0.1mm	± 0.15mm
ø16mm	± 0.1mm	± 0.15mm	ø5/8	± 0.1mm	± 0.15mm

6. Instructions for Tube Insertion

- ① Make sure that the cut end surface of the tube is at right angle without a scratch on the surface and deformations.
- ② When inserting a tube, the tube needs to be inserted fully into the push-in fitting until the tubing edge touches the tube end of the fitting as shown in the figure below. Otherwise, there is a risk of leakage.



Tube is not fully inserted up to tube end.

- ③ After inserting the tube, make sure it is inserted properly and not to be disconnected by pulling it moderately.
- ※ When inserting tubes, Lock-claws may be hardly visible in the hole, observed from the front face of the release-ring. But it does not mean the tube will surely escape. Major causes of the tube escape are the followings;
- ① Shear drop of the lock-claws edge
 - ② The problem of tube diameter (usually small)
- Therefore, follow the above instructions from ① to ③, even lock-claws is hardly visible.

7. Instructions for Tube Disconnection

- ① Make sure there is no air pressure inside of the tube, before disconnecting it.
- ② Push the release-ring of the push-in fitting evenly and deeply enough to pull out the tube toward oneself. By insufficient pushing of the release-ring, the tube may not be pulled out or damaged by scratch, and tube shavings may remain inside of the fitting, which may cause the leakage later.

8. Instructions for Installing a fitting

- ① When installing a fitting, use proper tools to tighten a hexagonal-column or an inner hexagonal socket. When inserting a hex key into the inner hexagonal socket of the fitting, be careful so that the tool does not touch lock-claws. The deformation of lock-claws may result in a poor performance of systems or an escape of the tube.
- ② Refer to Table 2 which shows the recommended tightening torque. Do not exceed these limits to tighten a thread. Excessive tightening may break the thread part or deform the gasket and cause a fluid leakage. Tightening thread with tightening torque lower than these limits may cause a loosened thread or a fluid leakage.
- ③ Adjust the tube direction while tightening thread within these limits, since some PISCO products are not rotatable after the installation.

● Table 2: Recommended tightening torque / Sealock color / Gasket materials

Thread type	Thread size	Tightening torque	Sealock color	Gasket materials
Metric thread	M3 × 0.5	0.7N·m	—	SUS304 NBR
	M5 × 0.8	1.0 ~ 1.5N·m		
	M6 × 1	2 ~ 2.7N·m		
	M3 × 0.5	0.5 ~ 0.6N·m		POM
	M5 × 0.8	1 ~ 1.5N·m		
	M6 × 0.75	0.8 ~ 1N·m		
Taper pipe thread	M8 × 0.75	1 ~ 2N·m	White	—
	R1/8	7 ~ 9N·m		
	R1/4	12 ~ 14N·m		
	R3/8	22 ~ 24N·m		
Unified thread	R1/2	28 ~ 30N·m	—	SUS304, NBR
	No.10-32UNF	1.0 ~ 1.5N·m		
National pipe thread taper	1/16-27NPT	7 ~ 9N·m	White	—
	1/8-27NPT	7 ~ 9N·m		
	1/4-18NPT	12 ~ 14N·m		
	3/8-18NPT	22 ~ 24N·m		
	1/2-14NPT	28 ~ 30N·m		

※ These values may differ for some products. Refer to each specification as well.

9. Instructions for removing a fitting

- ① When removing a fitting, use proper tools to loosen a hexagonal-column or an inner hex bolt.
- ② Remove the sealant stuck on the mating equipment. The remained sealant may get into the peripheral equipment and cause malfunctions.

10. Arrange piping avoiding any load on fittings and tubes such as twist, tensile, moment load, shaking and physical impact. These may cause damages to fittings, tube deformations, bursting and the escape of tubes.

Common Safety Instructions for Fittings

Before selecting or using PISCO products, read the following instructions. Read the detailed instructions for individual series as well as the instructions below.

Warning

1. Do not use fittings with fluid medium other than air or water. (Water can be used with some series.) Contact us for using other kind of fluid medium except air and water.
2. Do not use fittings except Anti-spatter, Brass and Brass Compression Fitting series in a place where the flame and weld spatter is produced. There is a risk of causing fire by sparks.
3. As for applications where threads or tubes swing / rotate, use Rotary Joints, High Rotary Joints or Multi-Circuit Rotary Block only. The other PISCO products can be damaged in these applications.
4. Use only Die Temperature Control Fitting Series, Tube Fitting Stainless SUS316 Series, Tube Fitting Stainless SUS316 Compression Fitting Series or Tube Fitting Brass Series under the condition of over 60°C (140° F) water or thermal oil. Other PISCO products can be damaged by heat and hydrolysis under the condition above.
5. As for the condition required to dissipate static electricity or provide an antistatic performance, use EG Series fitting and antistatic products only, and do not use other PISCO products. There is a risk that static electricity can cause system defects or failures.
6. Avoid any load on PISCO products, such as a tensile strength, twisting and bending. Otherwise, there is a risk of causing damage to the products.

⚠ Caution

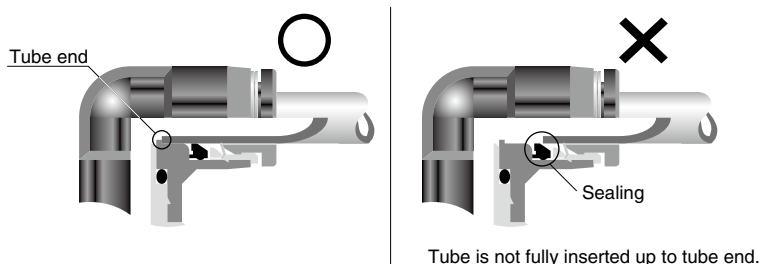
1. In case of using non-PISCO brand tubes, make sure the tolerance of the outer tube diameter is within the following limits of Table 1.

● Table 1. Tube O.D. Tolerance

mm size	Nylon tube	Urethane tube	inch size	Nylon tube	Urethane tube
ø1.8mm	—	± 0.05mm	ø1/8	± 0.1mm	± 0.15mm
ø3mm	—	± 0.15mm	ø5/32	± 0.1mm	± 0.15mm
ø4mm	± 0.1mm	± 0.15mm	ø3/16	± 0.1mm	± 0.15mm
ø6mm	± 0.1mm	± 0.15mm	ø1/4	± 0.1mm	± 0.15mm
ø8mm	± 0.1mm	± 0.15mm	ø5/16	± 0.1mm	± 0.15mm
ø10mm	± 0.1mm	± 0.15mm	ø3/8	± 0.1mm	± 0.15mm
ø12mm	± 0.1mm	± 0.15mm	ø1/2	± 0.1mm	± 0.15mm
ø16mm	± 0.1mm	± 0.15mm	ø5/8	± 0.1mm	± 0.15mm

2. Instructions for Tube Insertion

- ① Make sure that the cut end surface of the tube is at right angle without a scratch on the tube surface and deformations.
- ② When inserting a tube, the tube needs to be inserted fully into the push-in fitting until the tubing edge touches the tube end of the fitting as shown in the figure below. Otherwise, there is a risk of leakage.



- ③ After inserting the tube, make sure it is inserted properly and not to be disconnected by pulling it moderately.

3. Instructions for Tube Disconnection

- ① Make sure there is no air pressure inside of the tube, before disconnecting it.
- ② Push the release-ring of the push-in fitting evenly and deeply enough to pull out the tube toward oneself. By insufficient pushing of the release-ring, the tube may not be pulled out or damaged by scratch, and tube shavings may remain inside of the fitting, which may cause the leakage later.

4. Instructions for Installing a fitting

- ① When installing a fitting, use proper tools to tighten a hexagonal-column or an inner hexagonal socket. When inserting a hex key into the inner hexagonal socket of the fitting, be careful so that the tool does not touch lock-claws. The deformation of lock-claws may result in a poor performance of systems or an escape of the tube.
- ② Refer to Table 2 which shows the recommended tightening torque. Do not exceed these limits to tighten a thread. Excessive tightening may break the thread part or deform the gasket and cause a fluid leakage. Tightening thread with tightening torque lower than these limits may cause a loosened thread or a fluid leakage.
- ③ Adjust the tube direction while tightening thread within these limits, since some PISCO products are not rotatable the installation.

● Table 2: Recommended tightening torque / Sealock color / Gasket materials

Thread type	Thread size	Tightening torque	Sealock color	Gasket materials
Metric thread	M3 × 0.5	0.7N·m	—	SUS304 NBR
	M5 × 0.8	1.0 ~ 1.5N·m		
	M6 × 1	2 ~ 2.7N·m		
	M3 × 0.5	0.5 ~ 0.6N·m		POM
	M5 × 0.8	1 ~ 1.5N·m		
	M6 × 0.75	0.8 ~ 1N·m		
	M8 × 0.75	1 ~ 2N·m		
Taper pipe thread	R1/8	7 ~ 9N·m	White	—
	R1/4	12 ~ 14N·m		
	R3/8	22 ~ 24N·m		
	R1/2	28 ~ 30N·m		
Unified thread	No.10-32UNF	1.0 ~ 1.5N·m	—	SUS304, NBR
National pipe thread taper	1/16-28NPT	7 ~ 9N·m	White	—
	1/8-27NPT	7 ~ 9N·m		
	1/4-18NPT	12 ~ 14N·m		
	3/8-18NPT	22 ~ 24N·m		
	1/2-14NPT	28 ~ 30N·m		

※. These values may differ for some products. Refer to each specification as well

5. Instructions for removing a fitting

- ① When removing a fitting, use proper tools to loosen a hexagonal-column or an inner hexagonal socket.
- ② Remove the sealant stuck on the mating equipment. The remained sealant may get into the peripheral equipment and cause malfunctions.

6. Arrange piping avoiding any load on fittings and tubes such as twist, tensile, moment load, shaking and physical impact. These may cause damages to fittings, tube deformations, bursting and the escape of tubes.