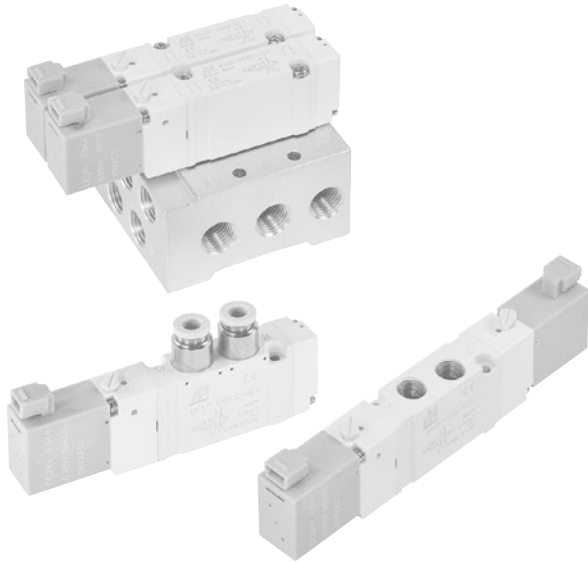


MVSP-156 series

SOLENOID VALVE



mindman



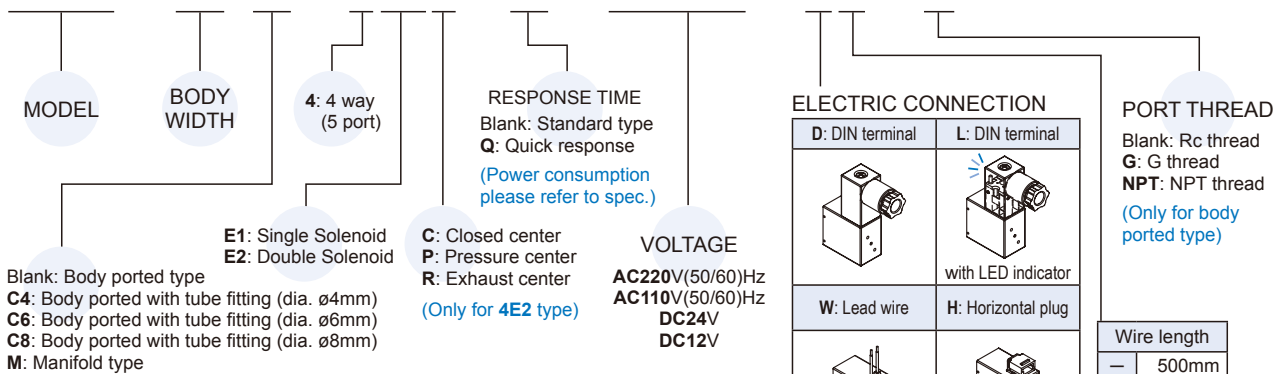
Specification

* Refer to page 1-21 for feature.

| Model | | 4E1 | 4E2 | 4E2 C.P.R |
|--------------------------|-----------------|----------------------------------|----------------------------------|-------------|
| Port size | | Rc1/8 | | |
| No. of port / position | | 5 / 2 | | 5 / 3 |
| Medium | | Air | | |
| Operating perssure range | | 0.15~0.7 MPa | | 0.2~0.7 MPa |
| Proof pressure | | 1 MPa | | |
| Effective orifice | Body ported | 11 mm ² | 9.5 / 14.6 / 9.5 mm ² | |
| | Manifold | 10 mm ² | 7.5 / 13 / 8 mm ² | |
| Response time | Standard | AC<36ms, DC<23ms | AC<46ms, DC<25ms | |
| | Quick response* | AC<32ms, DC<20ms | AC<40ms, DC<22ms | |
| Power consumption | Standard | AC=1.12VA, DC=0.95W | | |
| | Quick response* | AC=2.5VA, DC=2.5W | | |
| Ambient temperature | | -5~+50°C (No freezing) | | |
| Voltage | | AC110V, 220V (50/60)Hz, DC24/12V | | |
| Available voltage range | | ±10% | | |
| Insulation class | | F class | | |
| Weight | | 83 g | 118 g | 127 g |

Order example of valve

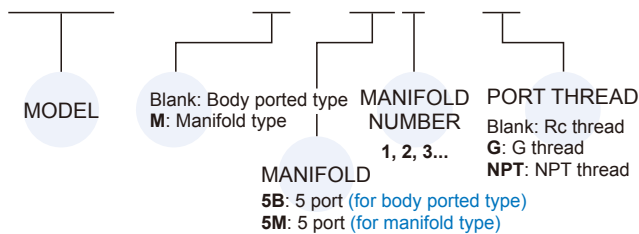
MVSP - 156M - 4E2C - □ - AC110 - H1 - G



* For quick response type, it cannot be energized for more than 30 minutes.

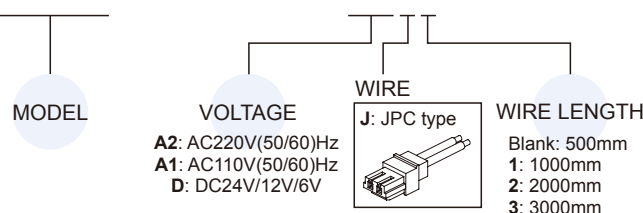
Order example of manifold

MVSY - 156M - 5B3 - G



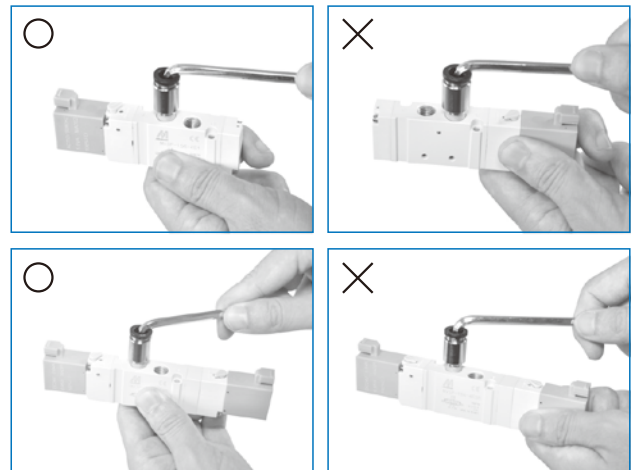
Order example of wire

MVDY - 100 - WA2J2



Caution

Prohibit apply force to coil when tighten the tube fitting.



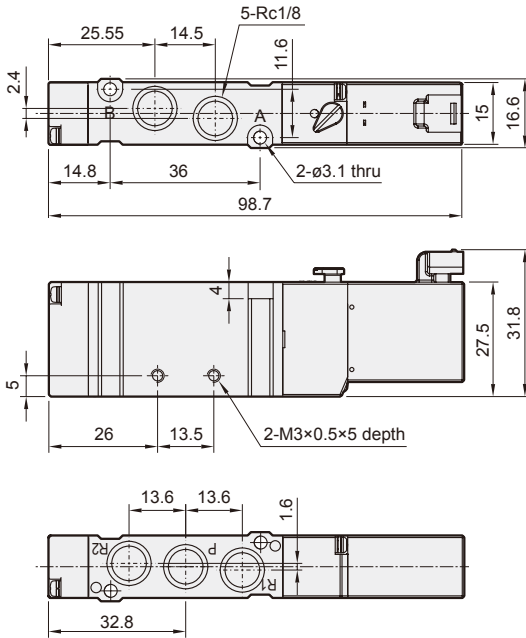
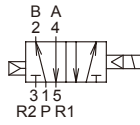
* Wire length only for "H: Horizontal plug".

MVSP-156 Dimensions

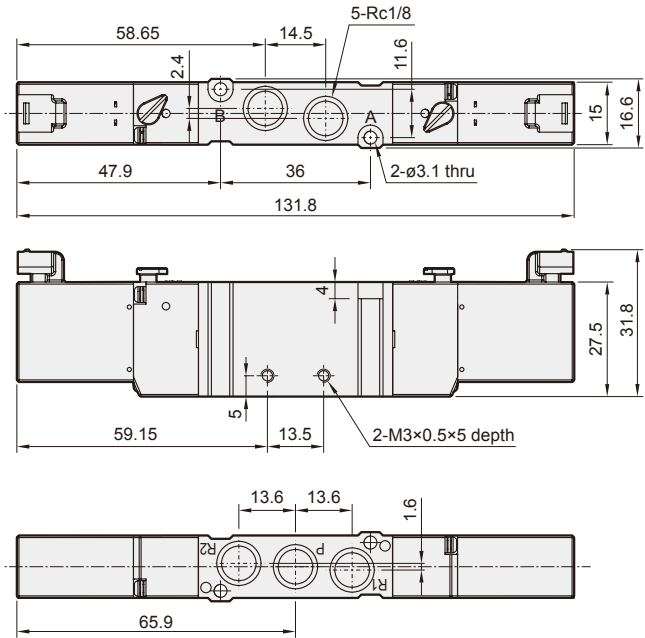
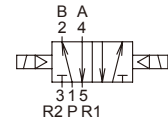
SOLENOID VALVE



MVSP-156-4E1



MVSP-156-4E2

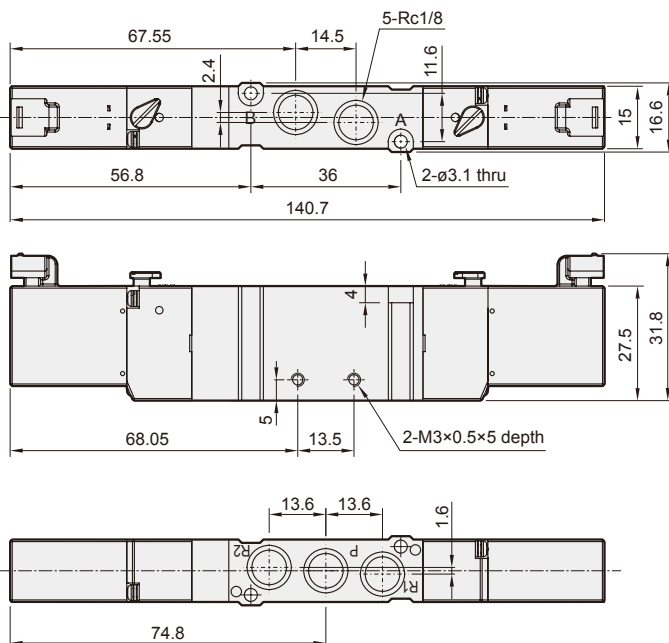
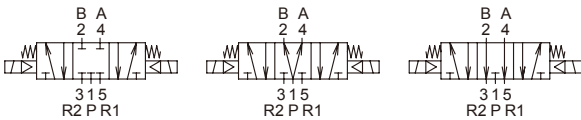


MVSP-156-4E2C.P.R

MVSP-156-4E2C

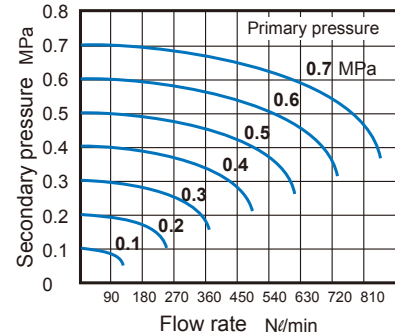
MVSP-156-4E2P

MVSP-156-4E2R

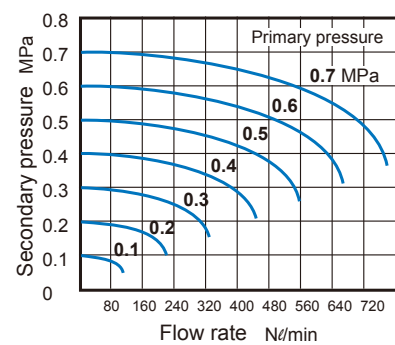


Flow features

MVSP-156-4E1/4E2



MVSP-156M-4E1/4E2

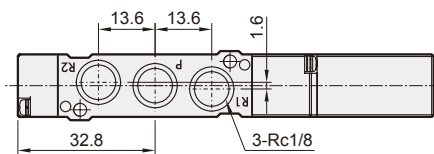
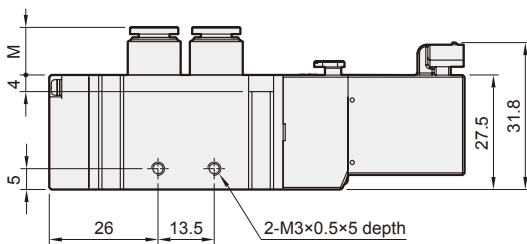
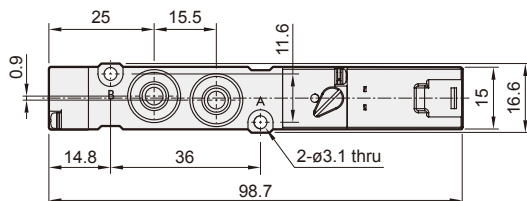
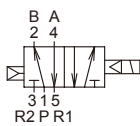


MVSP-156 Dimensions

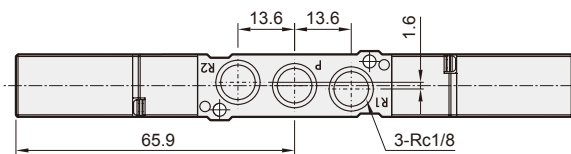
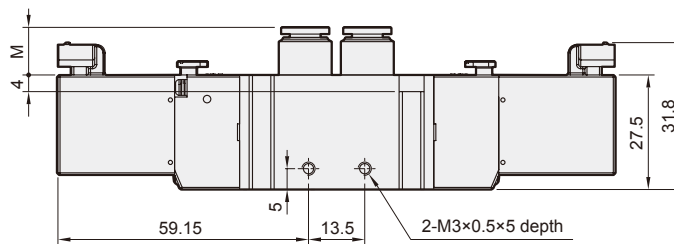
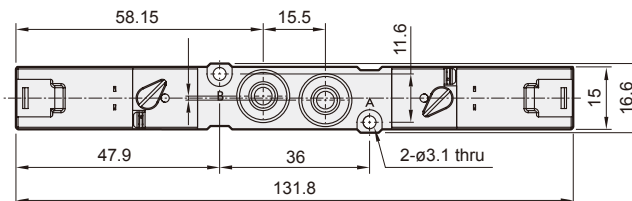
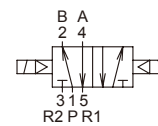
SOLENOID VALVE



MVSP-156C*-4E1



MVSP-156C*-4E2

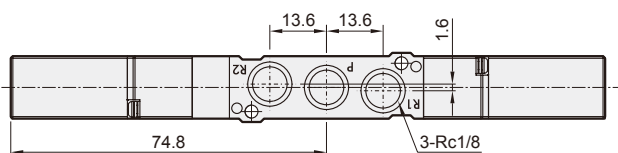
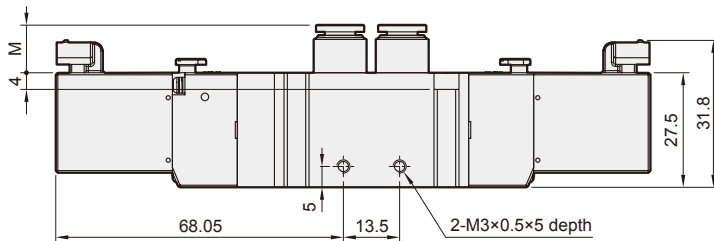
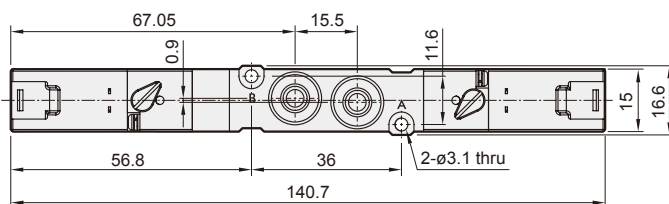
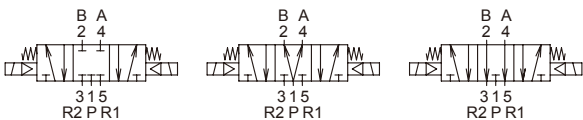


MVSP-156C*-4E2C.PR

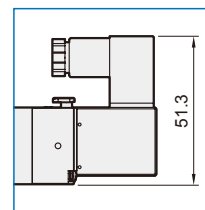
MVSP-156-4E2C

MVSP-156-4E2P

MVSP-156-4E2R



DIN terminal / DIN terminal with LED indicator



| Code Tube fitting | M |
|----------------------|--------|
| C4 (ø4) | (13.8) |
| C6 (ø6) | (14.7) |
| C8 (ø8) | (19.3) |

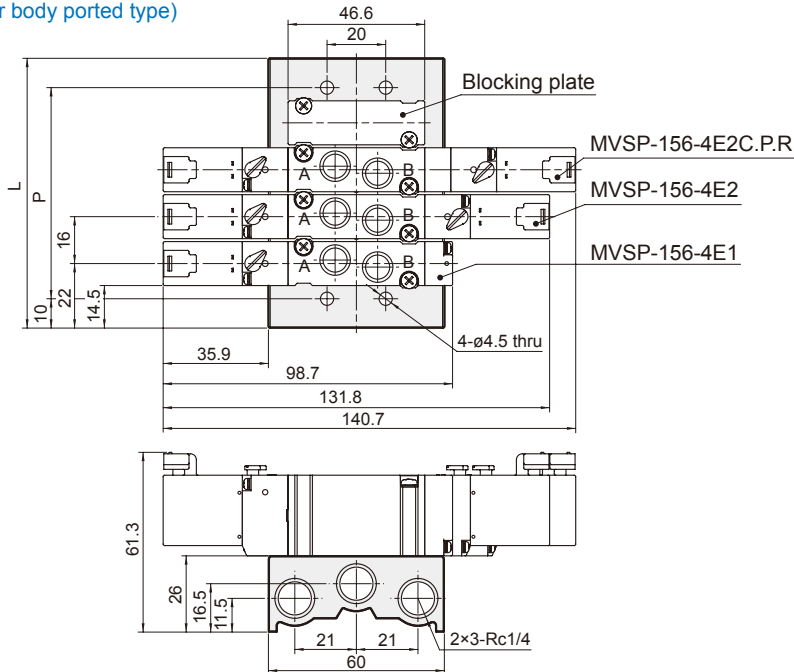
MVSP-156 Manifold

SOLENOID VALVE



MVSY-156-5B*

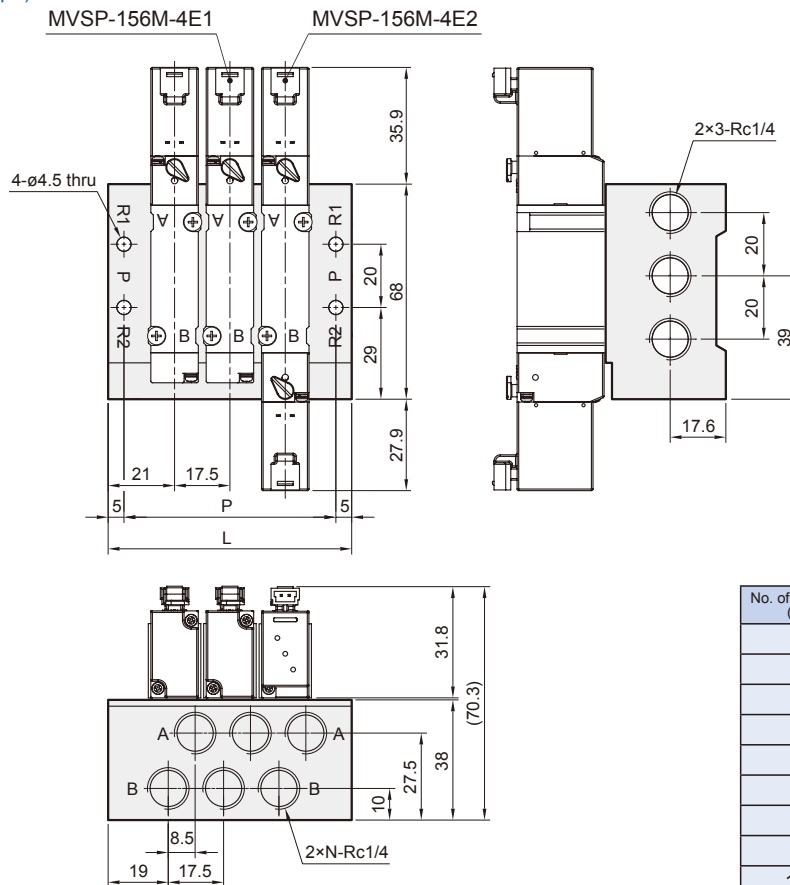
5 port (for body ported type)



| No. of stations | P | L |
|-----------------|-----|-----|
| 2 | 40 | 60 |
| 3 | 56 | 76 |
| 4 | 72 | 92 |
| 5 | 88 | 108 |
| 6 | 104 | 124 |
| 7 | 120 | 140 |
| 8 | 136 | 156 |
| 9 | 152 | 172 |
| 10 | 168 | 188 |

MVSY-156M-5M*

5 port (for manifold type)



| No. of stations (N) | P | L |
|---------------------|-------|-------|
| 2 | 49.5 | 59.5 |
| 3 | 67 | 77 |
| 4 | 84.5 | 94.5 |
| 5 | 102 | 112 |
| 6 | 119.5 | 129.5 |
| 7 | 137 | 147 |
| 8 | 154.5 | 164.5 |
| 9 | 172 | 182 |
| 10 | 189.5 | 199.5 |

MVSP-156 Mounting bracket & Spacer assembly



SOLENOID VALVE

mindman

Order example of bracket

* Use the same bracket with MVSYS.

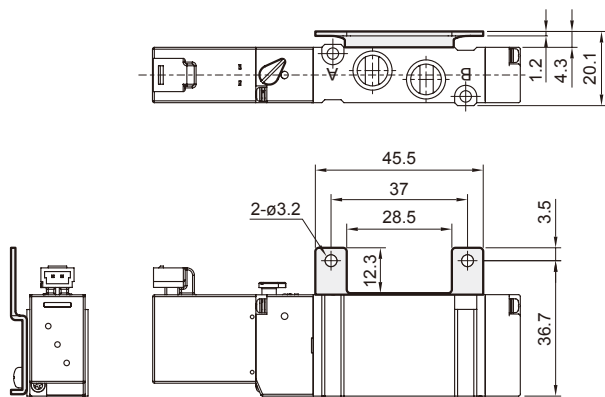
MVSYS – 156 – 1A

MODEL

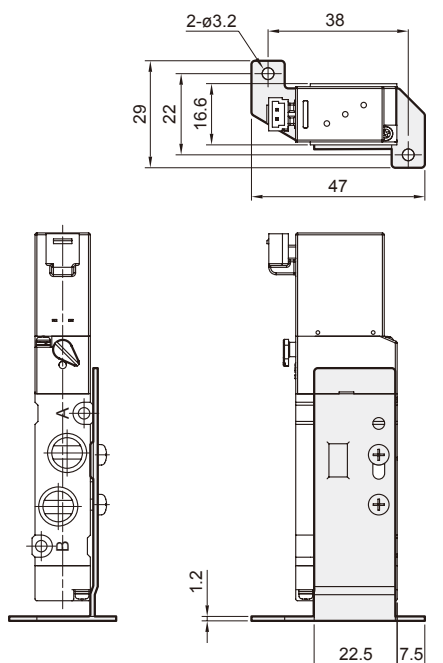
MOUNTING BRACKET

1A
2A

MVSYS-156-1A



MVSYS-156-2A



Order example of spacer assembly

* Use the same spacer assembly with MVSYS.

MVSYS – 156M – 5BP

MODEL

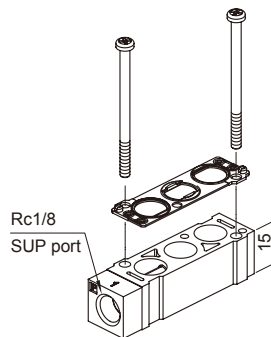
5B: 5 Port (for body ported type)
5M: 5 Port (for Manifold type)

SPACER ASSEMBLY

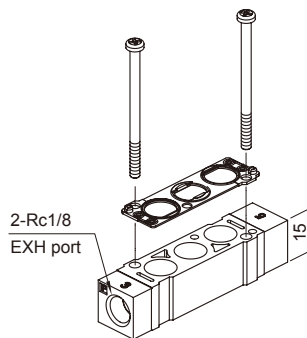
Blank: Body ported type
M: Manifold type

P: Individual SUP spacer assembly
R: Individual EXH spacer assembly
PR: Individual SUP spacer assembly+
Individual EXH spacer assembly

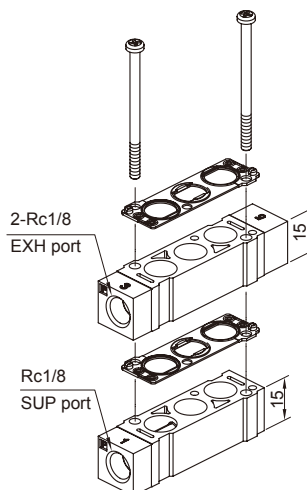
MVSYS-156-5BP



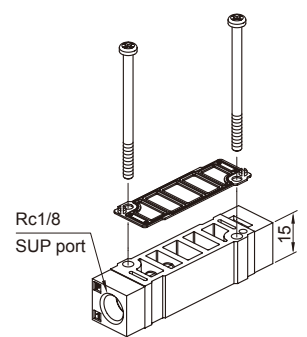
MVSYS-156-5BR



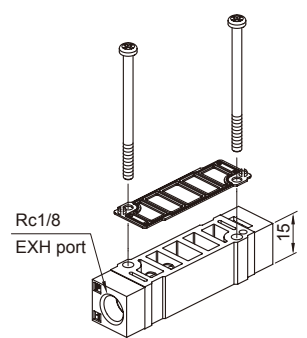
MVSYS-156-5BPR



MVSYS-156M-5MP



MVSYS-156M-5MR



MVSYS-156M-5MPR

